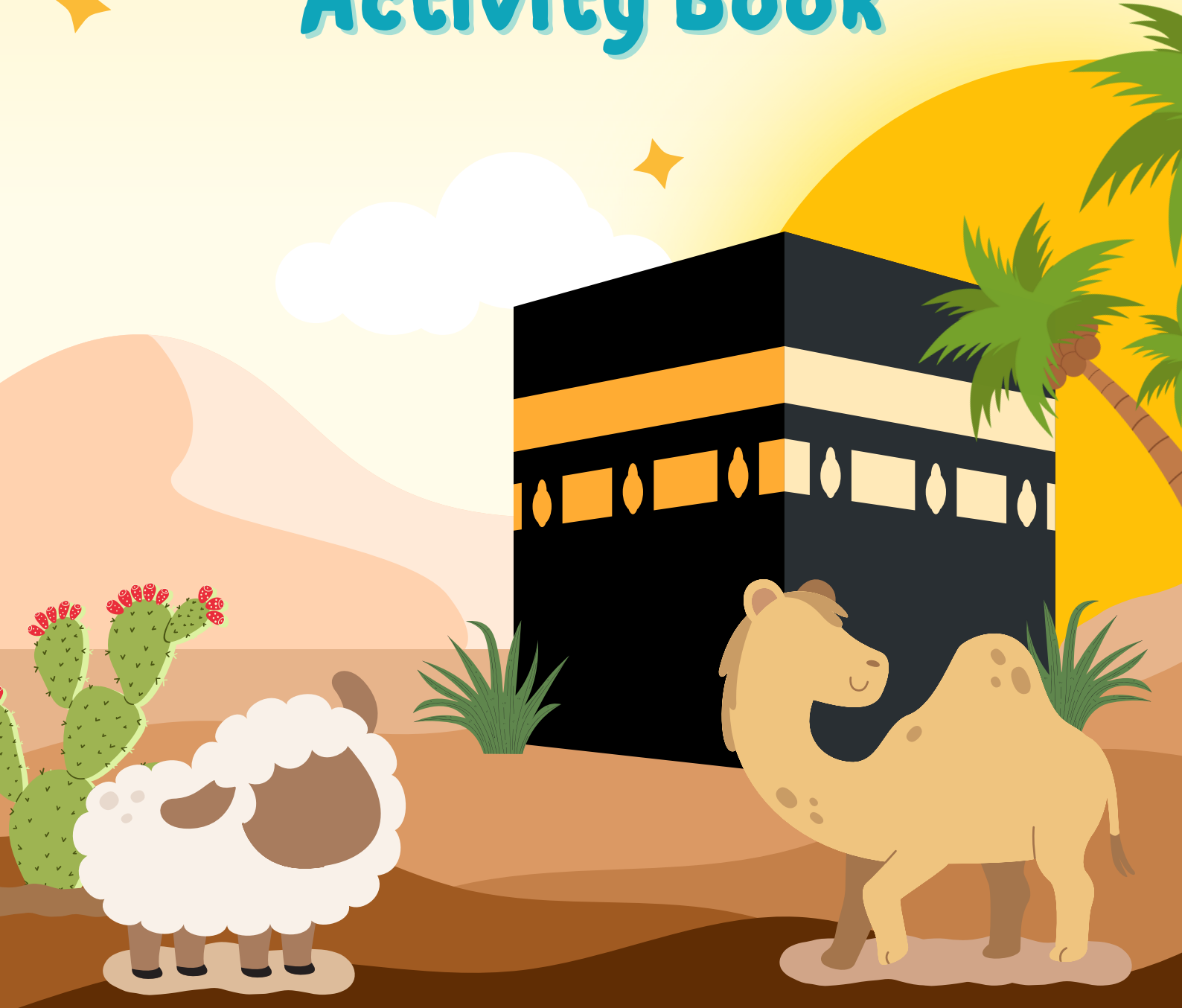




# EID

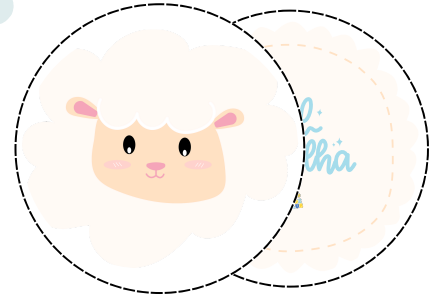
## AL-ADHA

### Activity Book



# Instructions:

## Cupcake Toppers



### 1. Cut out your disks

Carefully cut along the edges of each sheep design using your scissors. Try to stay on the lines for a neat finish!

### 2. Prepare your sticks

Take your skewer or toothpick. If the end is too sharp, ask an adult to help make it safer by trimming or covering it with tape.

### 3. Attach your disks

- Place a little glue on the back of your sheep disk.
- Stick it onto the top part of the skewer or toothpick.
- For a double-sided topper, glue two disks back-to-back with the stick sandwiched in between!

## Marshmallow Treat Bags

### 1. Fill the Bags

Scoop a generous amount of mini marshmallows into clear bags. Fill it up, but make sure you can still seal the top.

### 2. Seal the Bags

Once filled, twist the top of the bag or fold it neatly. Use a small piece of tape or a bag sealer to close it securely.

### 3. Cut Out Your Sheep Toppers

Carefully cut along the lines of the sheep disks to make them neat and ready.

### 4. Attach the Sheep

- Use tape or glue to stick the sheep topper on the front of the bag near the top, covering the seal.
- For a 3D effect, fold the sheep's ears slightly forward!
- You can also tape a sheep on the front and back.



# Instructions: (continued)

## Sweet Sheep Treat Box

### 1. Cut Out the Template

Carefully cut along the solid outer lines of the sheep template.

### 2. Fold the Box

Follow the dotted lines (marked “fold and glue”) to fold your box. Gently crease the folds for a neat shape.

### 3. Glue the Flaps

Apply glue or tape to the side flaps labeled “Fold & Glue”. Stick the flaps behind the adjacent sides to form the box shape.

### 4. Form the Box

Once glued, fold up the sides so they create a box. The sheep’s face should be at the front!

### 5. Fill It Up!

Add your treats inside — marshmallows, small chocolates, or any fun goodies.



# BIG Dreams

A little invested today can mean big opportunities tomorrow!

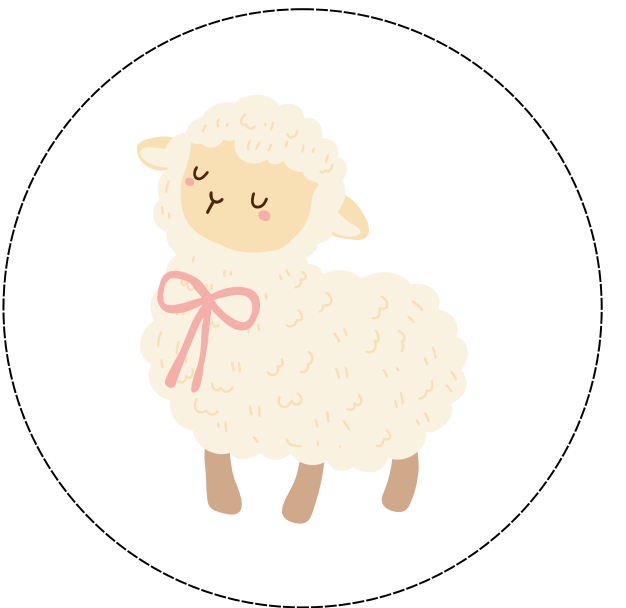
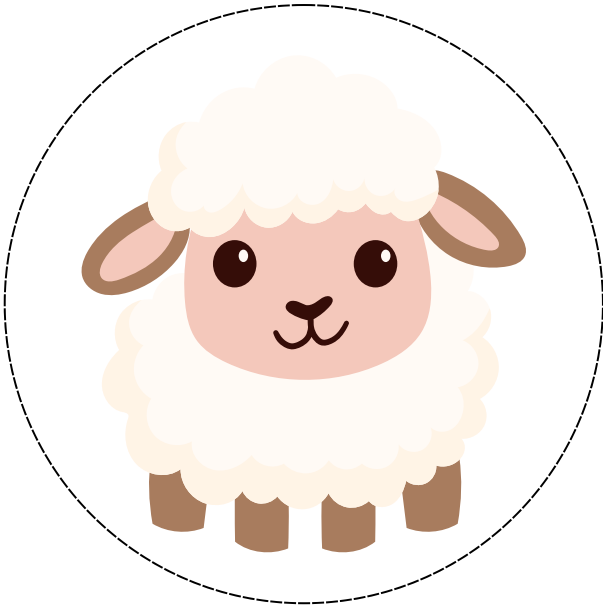
START  
SMALL!



info@roshgold.co.za  
www.roshgold.co.za  
016 422 2570 / 079 013 1385



# Cupcake Toppers





# Marshmallow Treat Bags

